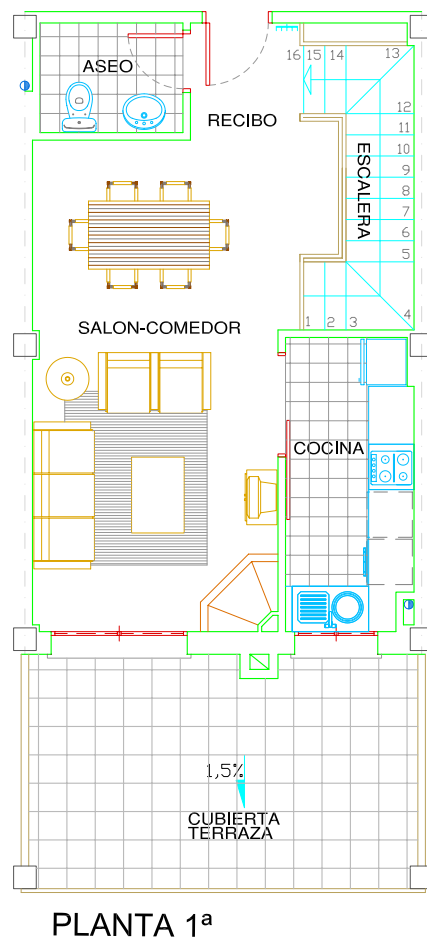
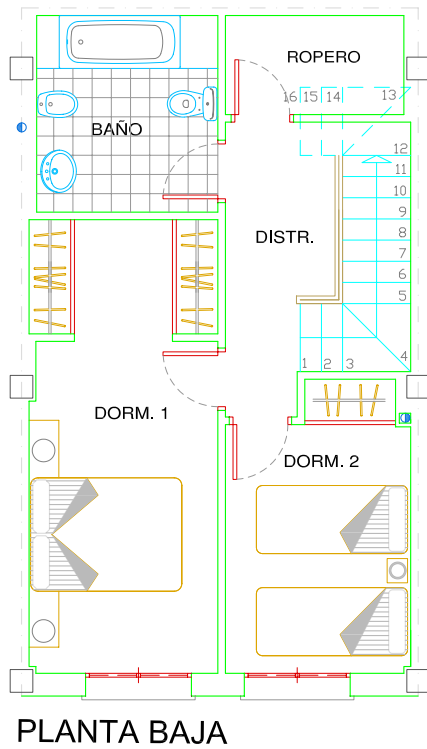


PLANTA BAJA Y PRIMERA

VIVIENDA 9(TIPO B*s) BLOQUE 3



ESCALA GRAFICA (1-100)

SUPERFICIES VIVIENDA 9(TIPO B*s)

| | |
|-------------------------|----------------------|
| SUP. UTIL CERRADA | 77.47m ² |
| SUP. CONSTRUIDA CERRADA | 91.97m ² |
| P.P.ELEM.COMUNES | 14.97 m ² |
| TERRAZA CUBIERTA (100%) | 16.68 m ² |

